

TYPE - A TYPICAL FLOOR PLAN

Total Area: 3200 sq. ft.

Unit Built up Area: 2752 sq. ft.

Common Circulation + Services: 448 sq. ft.

Carpet Area: 2166 sq. ft.



NOTE:

1. The window size/its location in rooms may change because of elevational features.
2. The overall layout may vary because of statutory reasons in case required.
3. Currently, no columns are shown in the plan which will be incorporated as per structure.
4. Layout shown is for illustration purposes, for specific unit floor plan please contact sales team.

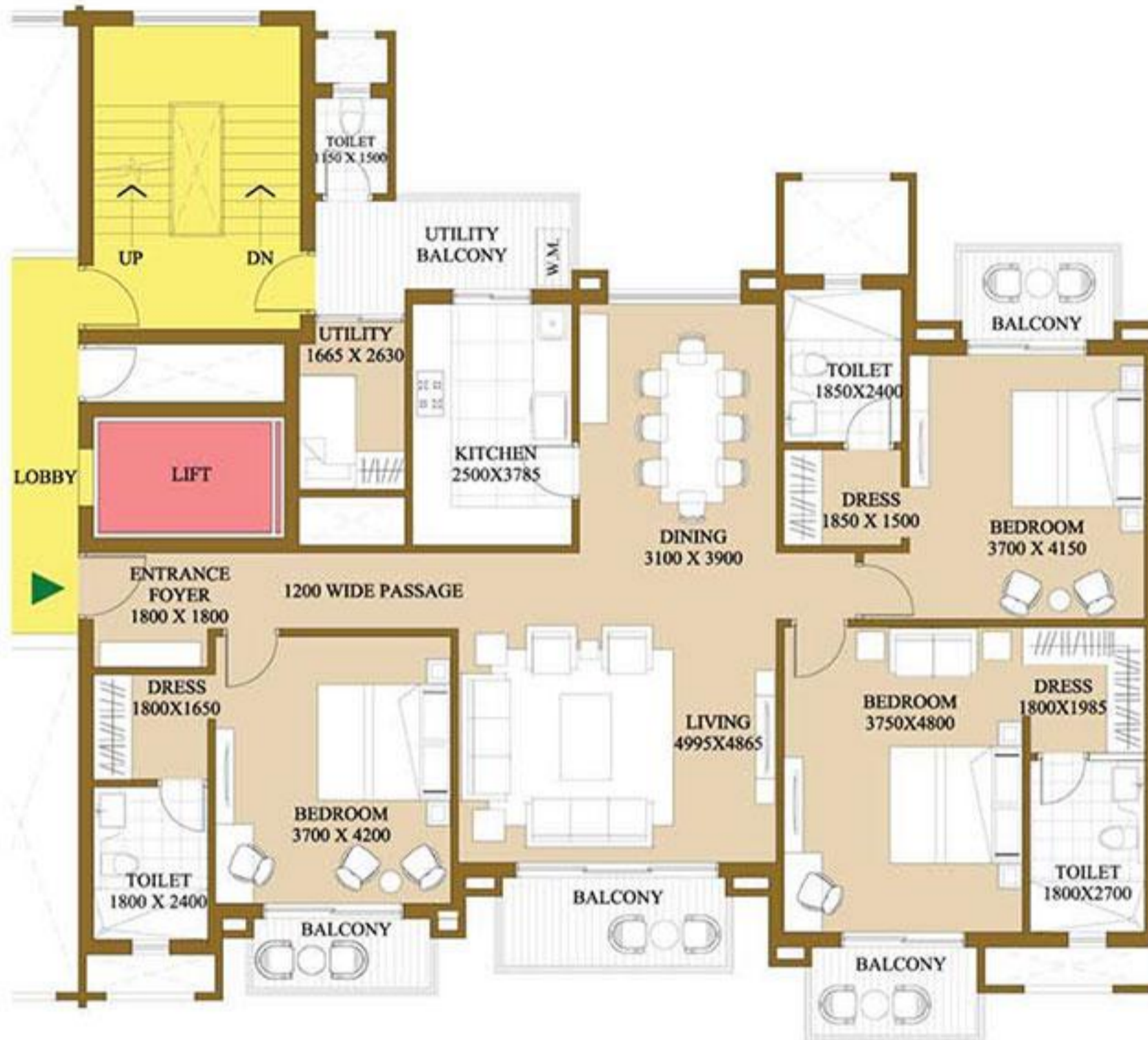
TYPE - B TYPICAL FLOOR PLAN

Total Area: 2300 sq. ft.

Unit Built up Area: 1925 sq. ft.

Common Circulation + Services: 375 sq. ft.

Carpet Area: 1492 sq. ft



NOTE:

1. The window size/its location in rooms may change because of elevational features.
2. The overall layout may vary because of statutory reasons in case required.
3. Currently, no columns are shown in the plan which will be incorporated as per structure.
4. Layout shown is for illustration purposes, for specific unit floor plan please contact sales team.

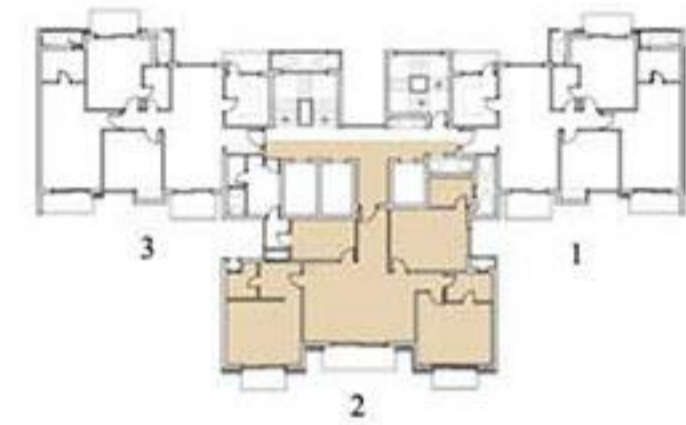
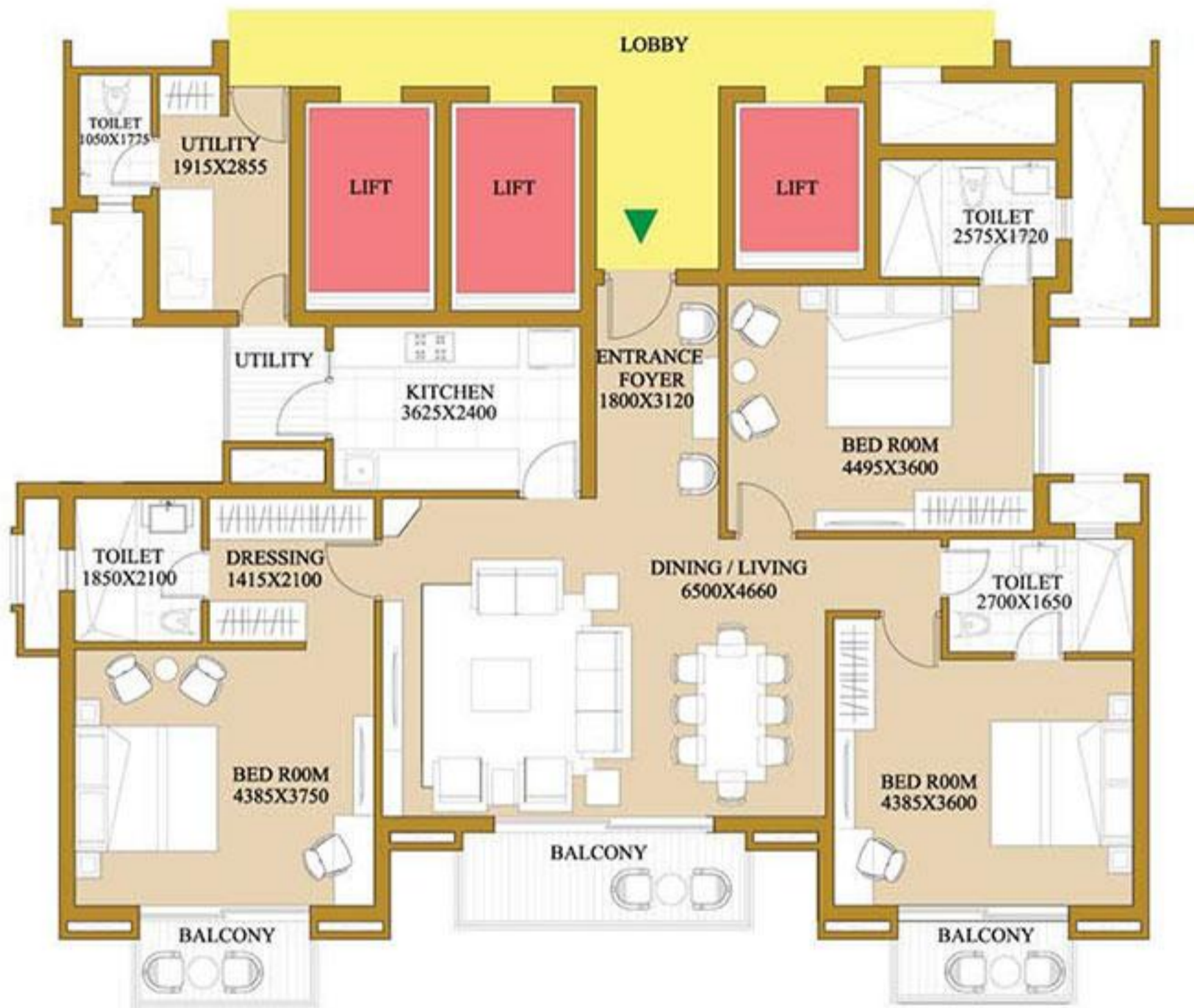
TYPE - C TYPICAL FLOOR PLAN

Total Area: 2000 sq. ft.

Unit Built up Area: 1675 sq. ft.

Common Circulation + Services: 325 sq. ft.

Carpet Area: 1345 sq. ft



KEY PLAN

NOTE:

1. The window size/its location in rooms may change because of elevational features.
2. The overall layout may vary because of statutory reasons in case required.
3. Currently, no columns are shown in the plan which will be incorporated as per structure.
4. Layout shown is for illustration purposes, for specific unit floor plan please contact sales team.

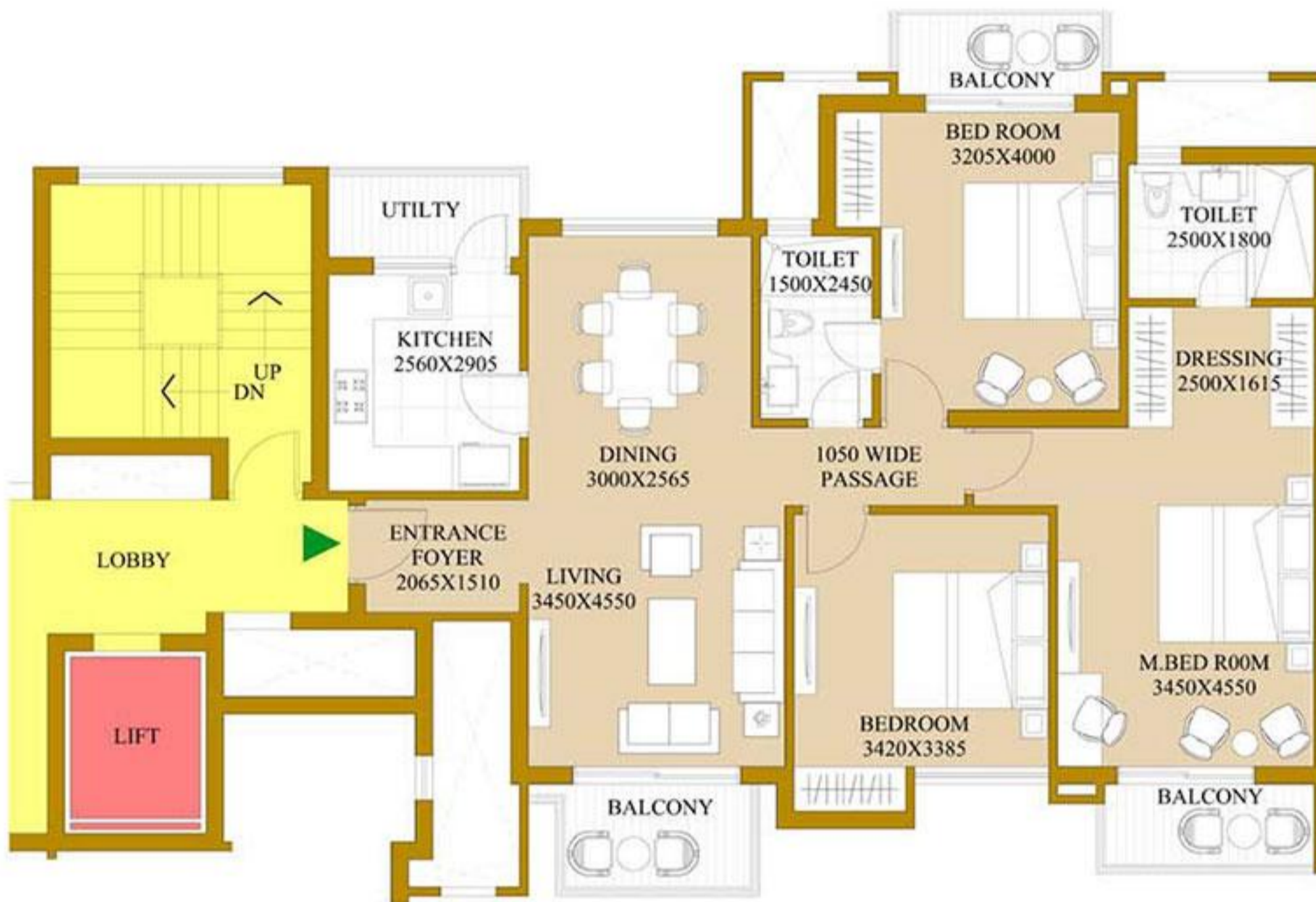
TYPE - D TYPICAL FLOOR PLAN

Total Area: 1625 sq. ft.

Unit Built up Area: 1320 sq. ft.

Common Circulation + Services: 305 sq. ft.

Carpet Area: 1027 sq. ft



KEY PLAN

NOTE:

1. The window size/its location in rooms may change because of elevational features.
2. The overall layout may vary because of statutory reasons in case required.
3. Currently, no columns are shown in the plan which will be incorporated as per structure.
4. Layout shown is for illustration purposes, for specific unit floor plan please contact sales team.